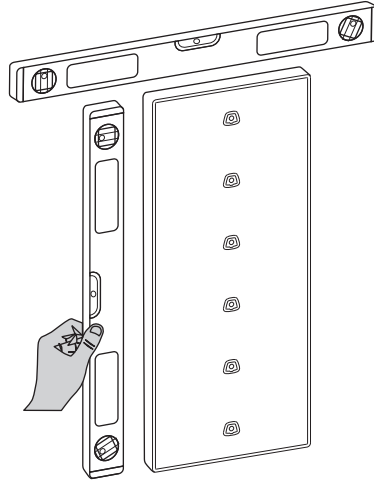
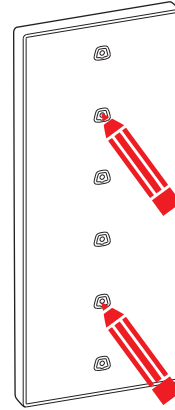




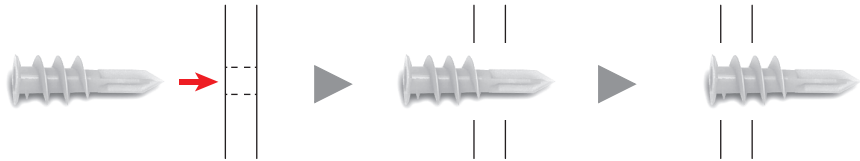
**Step 1.**  
Place the Optitile on the wall  
and make sure it is even and level



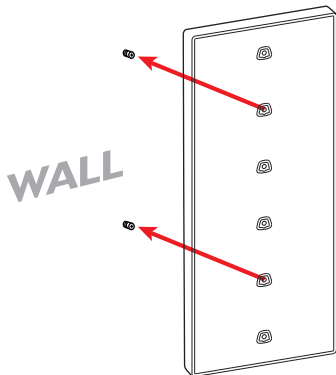
**Step 2.**  
Mark the 2nd and the 5th hole  
with a pencil on the wall



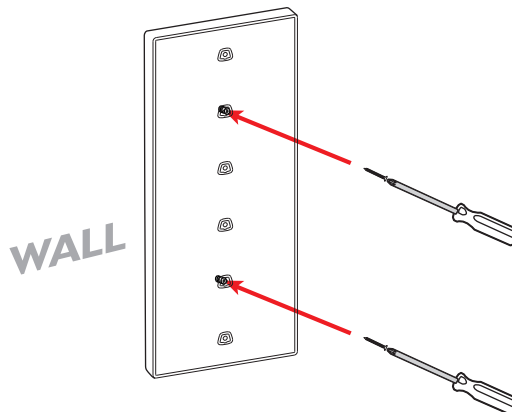
**Step 3.**  
Remove the Optitile from the wall and insert the anchors into the marked spots



**Step 4.**  
Place the Optitile back on the wall  
and line up the anchors with the  
2nd and the 5th hole



**Step 5.**  
Use the 2 screws to secure the Optitile  
on the 2nd and the 5th holes



**Step 6.**  
Insert the 6  
frame holders

